



ESTES PARK
COLORADO

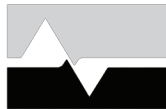
970-577-3588 | www.estes.org/lightpower/conservation.aspx



970-221-6700 | www.fcgov.com/utilities



303-651-8386 | www.ci.longmont.co.us/lpc



Loveland Water and Power

970-962-3000 | www.cityofloveland.org/Conservation



PLATTE RIVER
POWER AUTHORITY

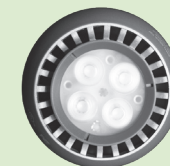
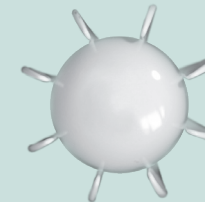
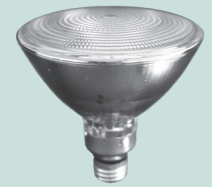
970-226-4000 | www.prpa.org

6/2011



ILLUMINATING FACTS







Federal Light Bulb Legislation
QUICK REFERENCE GUIDE



ILLUMINATING FACTS

Federal Light Bulb Legislation — Quick Reference Guide

Beginning January 2012, federal legislation will require common incandescent light bulbs to be more efficient. To ease the transition, we created the chart below that shows what bulbs you need to replace and when, as well as energy efficient replacement options that are currently available. Why wait? Start saving energy and money today!

AFFECTED BULBS		TIMING	NEW EFFICIENCY STANDARDS		NEW BULBS AVAILABLE:	EEI Energy Efficient Incandescent	CFL* Compact Fluorescent Lamp	LED* Light Emitting Diode
	100 Watt Medium Base	Can no longer manufacture 1/1/2012 Inventory sellable until depleted	Maximum wattage Lumens (brightness) Life (hours)	72 Watts 1,490-2,600 1,000	Watts Energy Reduction Life (hours) Lifetime Savings	72 30% 1,000 \$2	23 75% 10,000 \$54	NOT YET AVAILABLE
	75 Watt Medium Base	Can no longer manufacture 1/1/2013 Inventory sellable until depleted	Maximum wattage Lumens (brightness) Life (hours)	53 Watts 1,050-1,489 1,000	Watts Energy Reduction Life (hours) Lifetime Savings	53 30% 1,000 \$2	18 75% 10,000 \$40	NOT YET AVAILABLE
	60 Watt Medium Base	Can no longer manufacture 1/1/2014 Inventory sellable until depleted	Maximum wattage Lumens (brightness) Life (hours)	43 Watts 750-1,049 1,000	Watts Energy Reduction Life (hours) Lifetime Savings	42 30% 1,000 \$2	13 75% 10,000 \$35	12 75% 25,000+ \$88
	40 Watt Medium Base	Can no longer manufacture 1/1/2014 Inventory sellable until depleted	Maximum wattage Lumens (brightness) Life (hours)	29 Watts 310-749 1,000	Watts Energy Reduction Life (hours) Lifetime Savings	29 30% 1,000 \$1	9 75% 10,000 \$25	9 75% 25,000+ \$61
	PAR20 PAR30 PAR38 Greater than 39 Watts	Can no longer manufacture 7/14/2012 Inventory sellable until depleted	19 Lumens per Watt Life (hours) Legislation doesn't affect incandescent reflectors, PAR 16, MR 16 and/or GU10	1,000	Watts Energy Reduction Life (hours) Lifetime Savings	65 Max up to 30% 1,000 \$6	14 ** 75% 10,000 \$50	13 75% 25,000+ \$150
	T12 F34 F40 F96 T8 F32 F96	Can no longer manufacture 7/14/2012 Inventory sellable until depleted	88-89 Lumens per Watt Linear fluorescent lamps less than four feet long are not affected.		NEW UPGRADES: Watts Energy Reduction Life (hours) Lifetime Savings`	Standard T8 lamp and electronic ballast 32 30% 20,000 \$2	Low wattage T8 lamp and low ballast factor electronic ballast 25-28 60% 30,000 \$5	

Lifetime savings assumes \$0.07 per kilowatt-hour electric rate and 900 annual operating hours.

*Choose a product with the ENERGY STAR® logo for maximum quality and performance.

**Rebates for specialty CFLs (e.g., floods, globes, 3-ways, etc.) are available at some retailers.